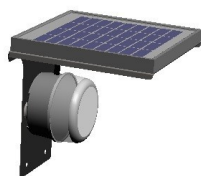
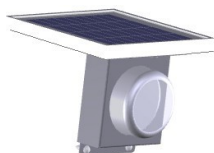


FF SOLAR

ENERGIAS RENOVÁVEIS



SOL1B



SOL2B

SOLAR LIGHTING KIT—FOR POLE

It effectively illuminates paths, gardens, camps, car parks, building environments.
Automatically lights with night sensor.

SOL1B KIT: can be fixed directly on a wooden pole, min 10cm wide, or on a wall exposed to the sun.

SOL2B KIT: can be fixed on top of a wooden tray with a width of 10-11 cm. The metal cover covers the lamp base for improved protection and integrated design.

Lighting range: 5 m in the front and 7 m in each side.



	SOL1B	SOL2B
Lighting	1 LED 60 lumen	
Autonomy	untill 12 hours *	
Charge	6 - 8 hours	
Solar Panel	3W 350mA, 19x20 cm	
Battery	03 Ni-MH AA 2000mAh	
Mounting bracket dimensions	10 cm width	11 cm width
Weight	1,5 kg	1 kg

* the duration depends on the amount of sunlight received during the day.

INSTALLATION TIPS: It should be installed in a shadow free area so that the solar cells are directly exposed to sun-light. **MAINTENANCE:** Regularly clean the surfasse of the solar panel with water to ensure the best operation. Replace the batteries after 2 or 3 years of use. **WARRANTY:** 2 years. 5 years of warranty for the solar panel. Damage caused by improper installation or use to the owner's liability.



Solar panels, batteries and electronic circuit must be recycled or collected according to the regulations in force. Used eletrical products should not be disposed of as household waste.